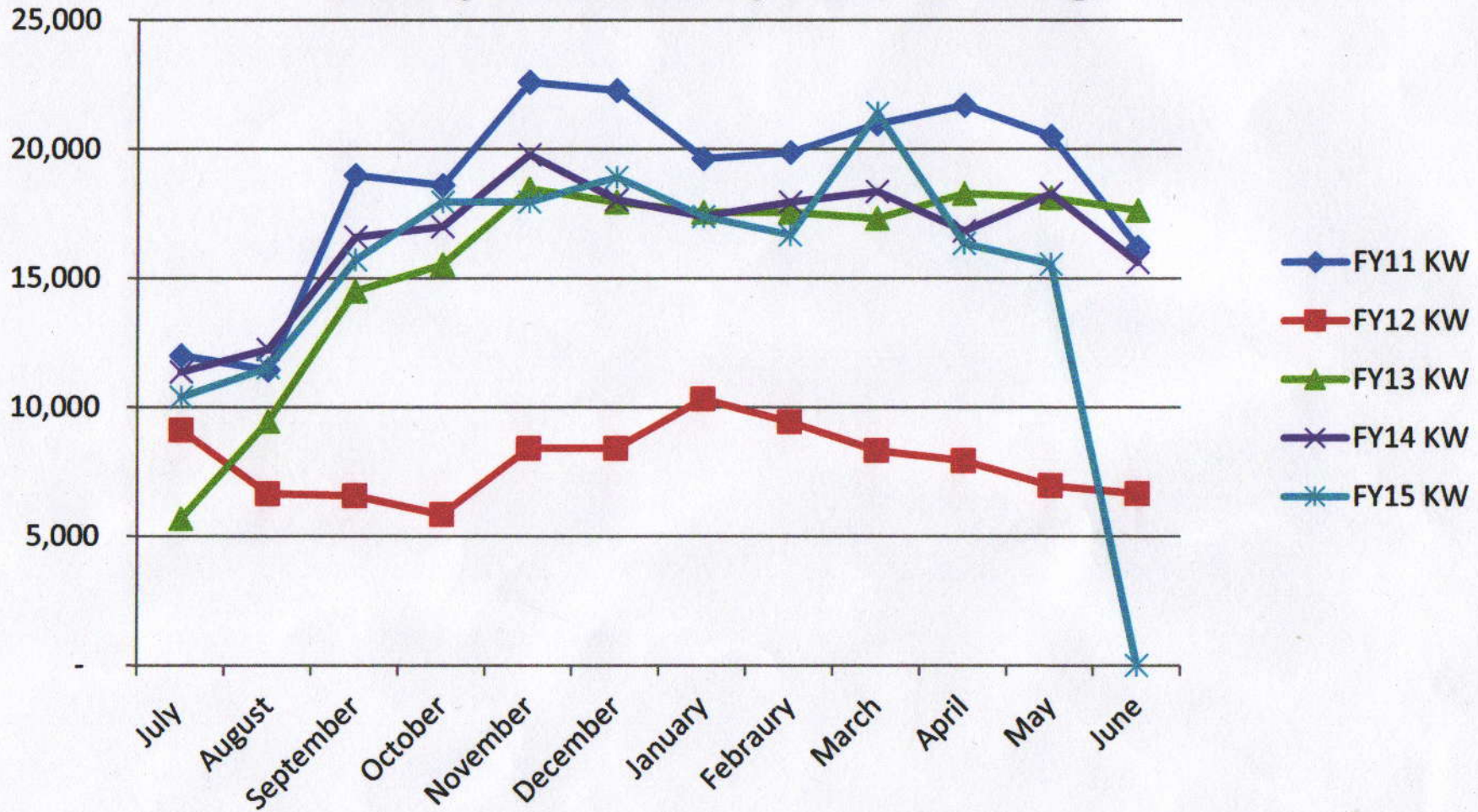


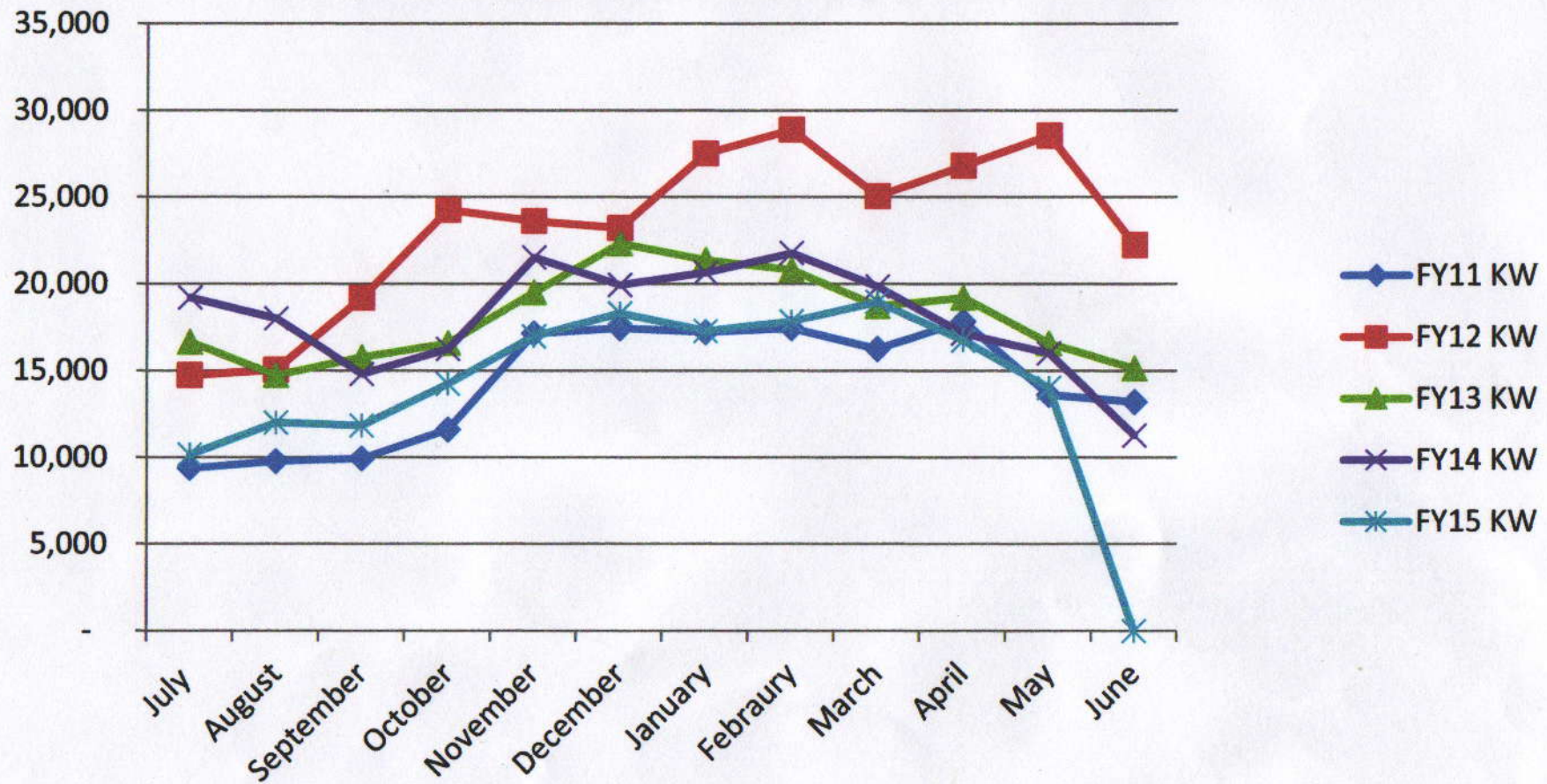
KW used Unutil Area - North Middlesex Regional School District

| | (thru apr/may) | | | |
|--------------------------|------------------|------------------|------------------|------------------|
| | FY15 | FY14 | FY13 | FY12 |
| AES KW | 179,733 | 199,362 | 187,934 | 94,585 |
| SMS KW | 329,260 | 374,243 | 353,656 | 412,925 |
| SECC KW | 168,328 | 216,330 | 217,291 | 279,047 |
| HBMS KW | 529,490 | 563,816 | 508,354 | 552,284 |
| NMRHS KW | 696,267 | 853,182 | 783,359 | 788,687 |
| Total Unutil Area | 1,903,078 | 2,206,933 | 2,050,594 | 2,127,528 |

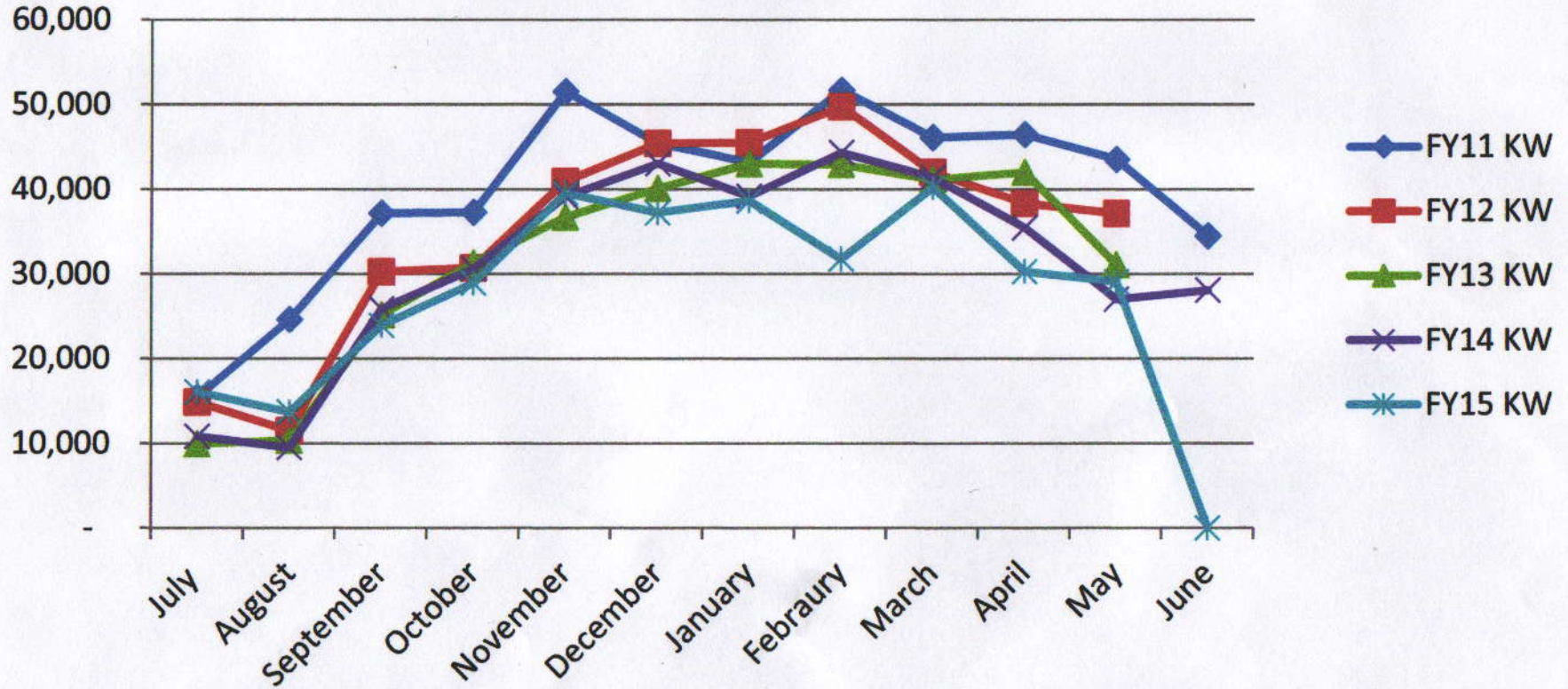
Ashby Elementary Electric Usage



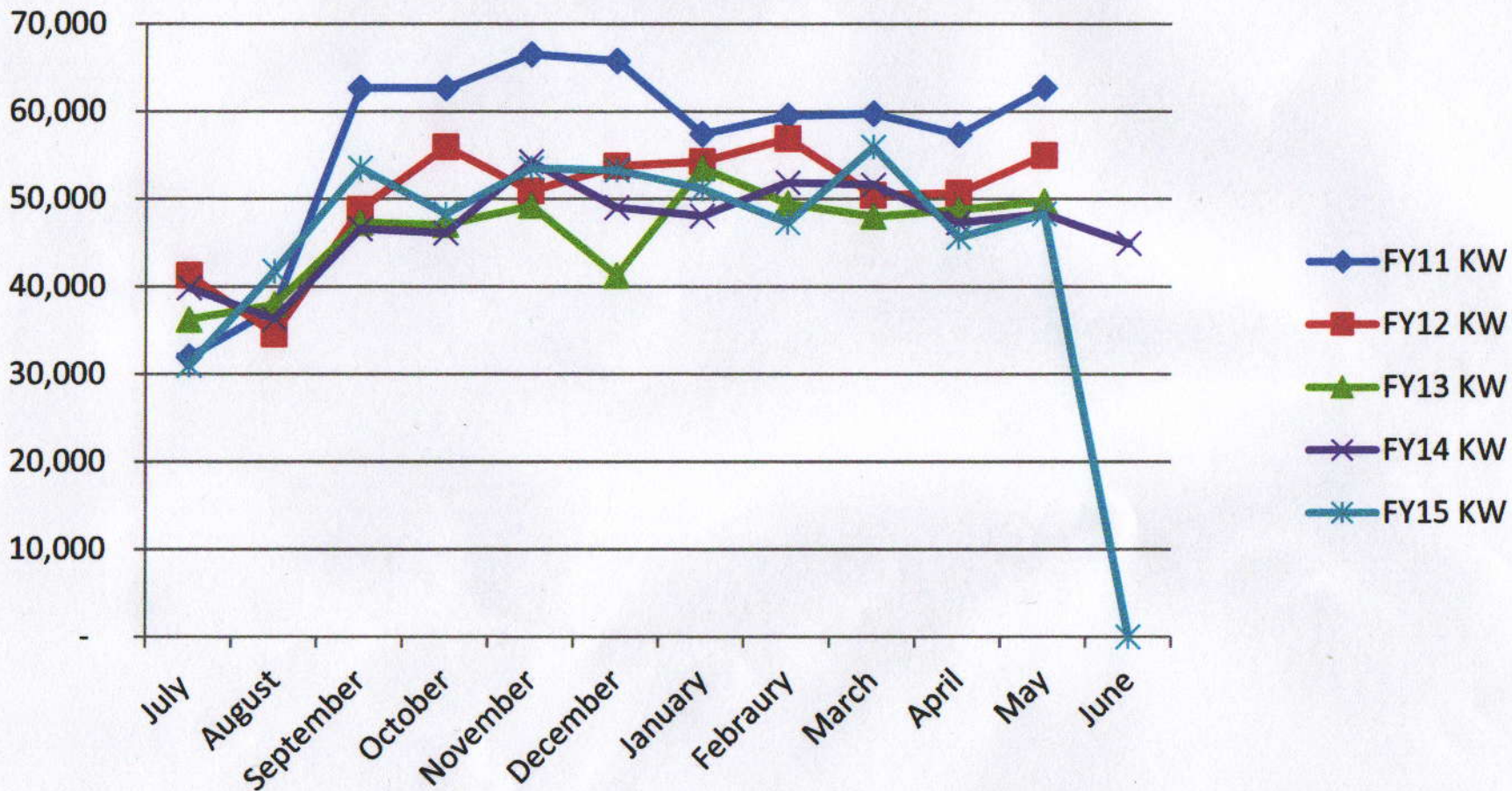
Squannacook Childhood Electric Usage



SPAULDING MEMORIAL ELEMENTARY ELECTRIC USAGE



Hawthorne Brook Electric Usage



High School Electric Usage

